



2008 Annual General Meeting

Disclaimer

This Presentation is provided on the basis that none of the Company nor its respective officers, shareholders, related bodies corporate, partners, affiliates, employees, representatives and advisers make any representation or warranty (express or implied) as to the accuracy, reliability, relevance or completeness of the material contained in the Presentation and nothing contained in the Presentation is, or may be relied upon as, a promise, representation or warranty, whether as to the past or the future. The Company hereby excludes all warranties that can be excluded by law.

The Presentation contains prospective financial material which is predictive in nature and may be affected by inaccurate assumptions or by known or unknown risks and uncertainties, and may differ materially from results ultimately achieved.

All persons should consider seeking appropriate professional advice in reviewing the Presentation and all other information with respect to the Company and evaluating the business, financial performance and operations of the Company. Neither the provision of the Presentation nor any information contained in the Presentation or subsequently communicated to any person in connection with the Presentation is, or should be taken as, constituting the giving of investment advice to any person.

Corporate

Shares on issue (TEX)	104.3m
Listed options (TEXO)	62.8m
Share price (18/11)	3.8c
Market Cap	A\$4.0m
Cash (31/10)	A\$5.1m

Directors & Management

Didier Murcia	Chairman
Laurence Roe	Managing Director
Mike Martin	Non Executive Director
Paul Lloyd	Non Executive Director
Rowan Caren	Company Secretary
Ron Krenzke	Manager, North America
Stephen Morris	Development Advisor

Corporate

Objective

“To create shareholder wealth through building a world-class independent exploration and production company.”

Strategy

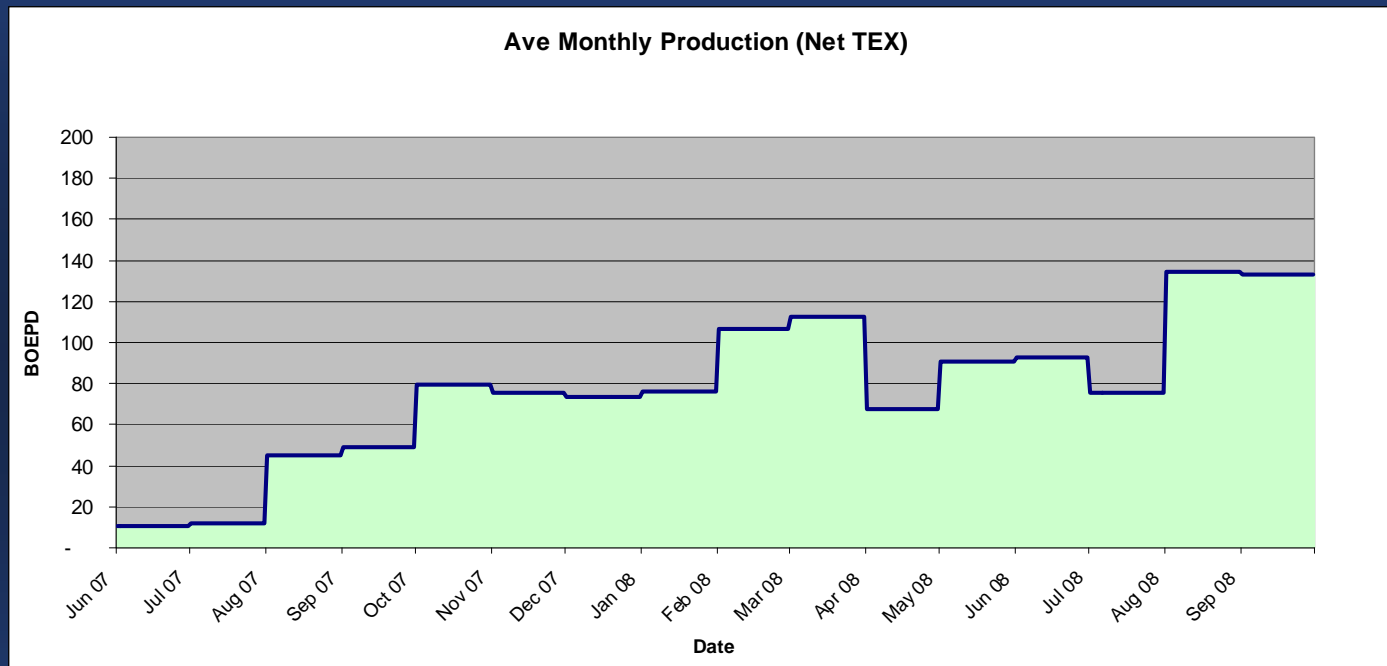
Balance low risk opportunities alongside high risk-high reward prospects.

Explore in known active, producing areas close to producing infrastructure.

Partner with successful explorers and producers.

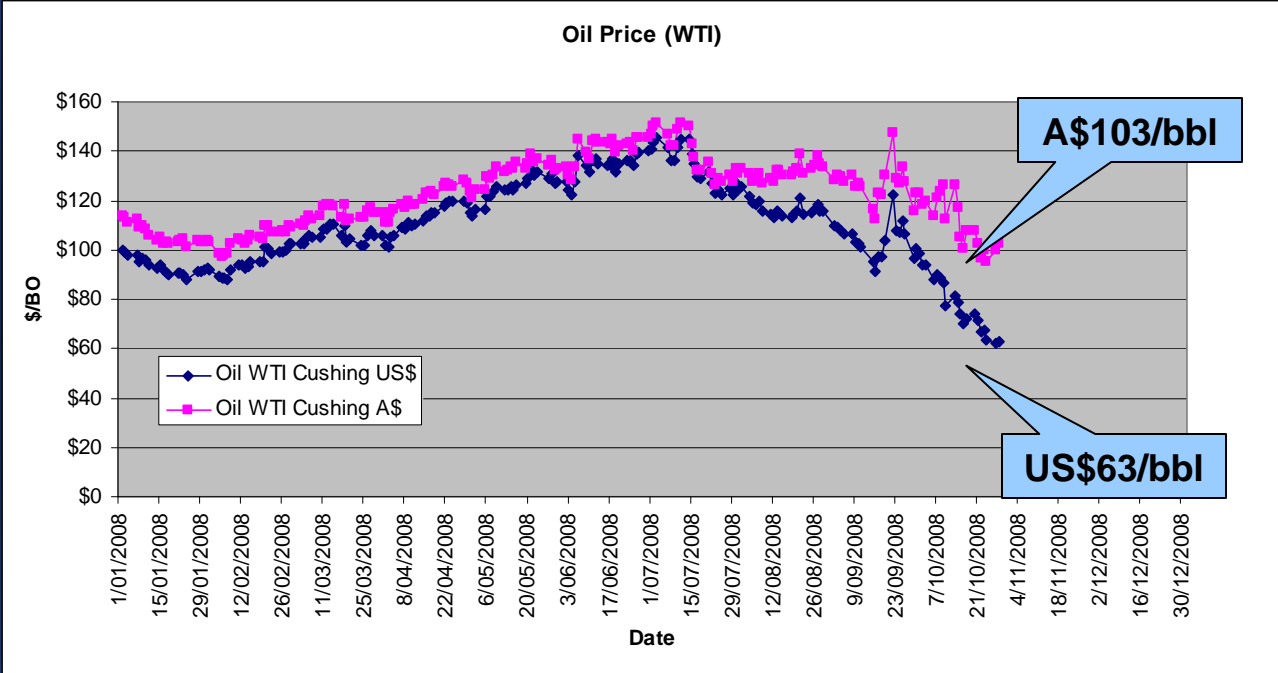
Use technology to reduce exploration risk.

Production & Revenue



Pine Pasture #2 should bring our net average monthly production to app 165 BOE

Production & Revenue



Commodity prices easing, but some cushioning from lower A\$

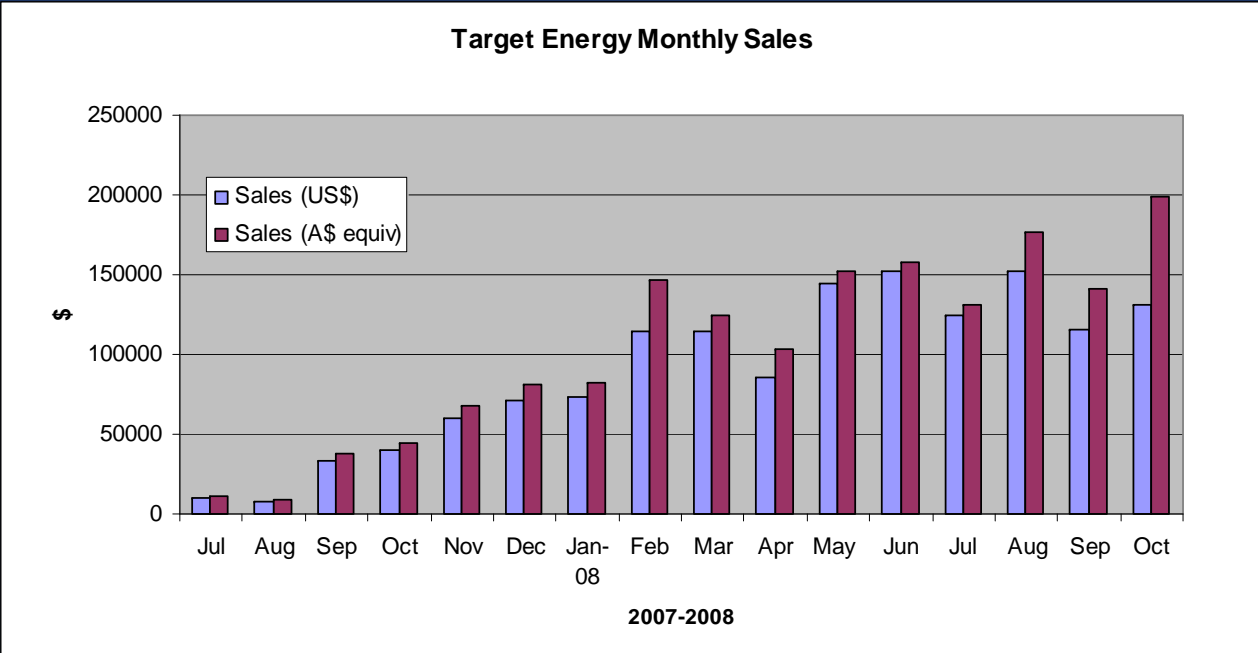
Production & Revenue

Sales Revenue* 2007/2008

A\$1.02m

Sales Revenue* 1/7/08 to 31/10/08

A\$0.65m



*Net to TEX, after state taxes

Projects

Louisiana



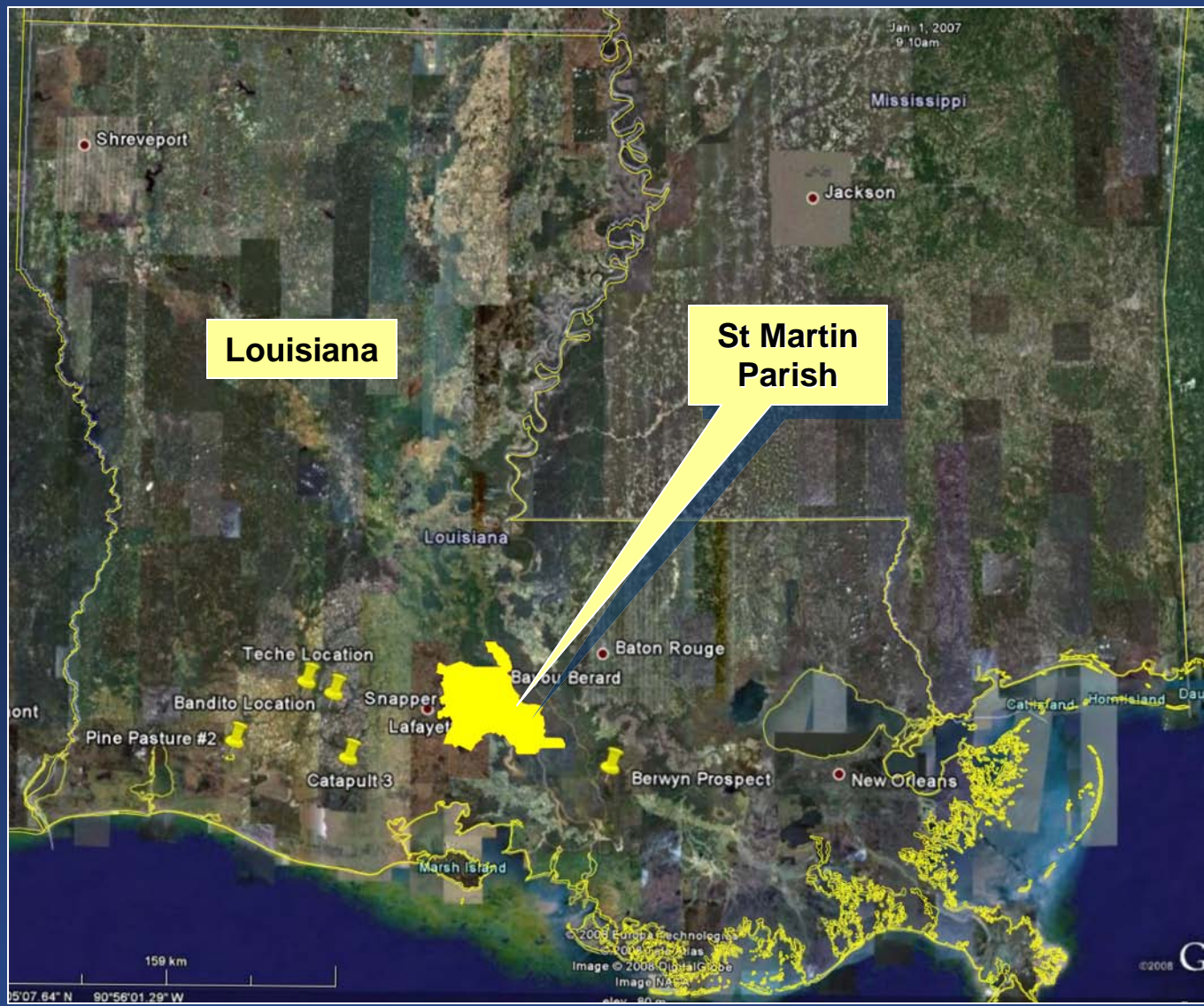
Projects

Louisiana



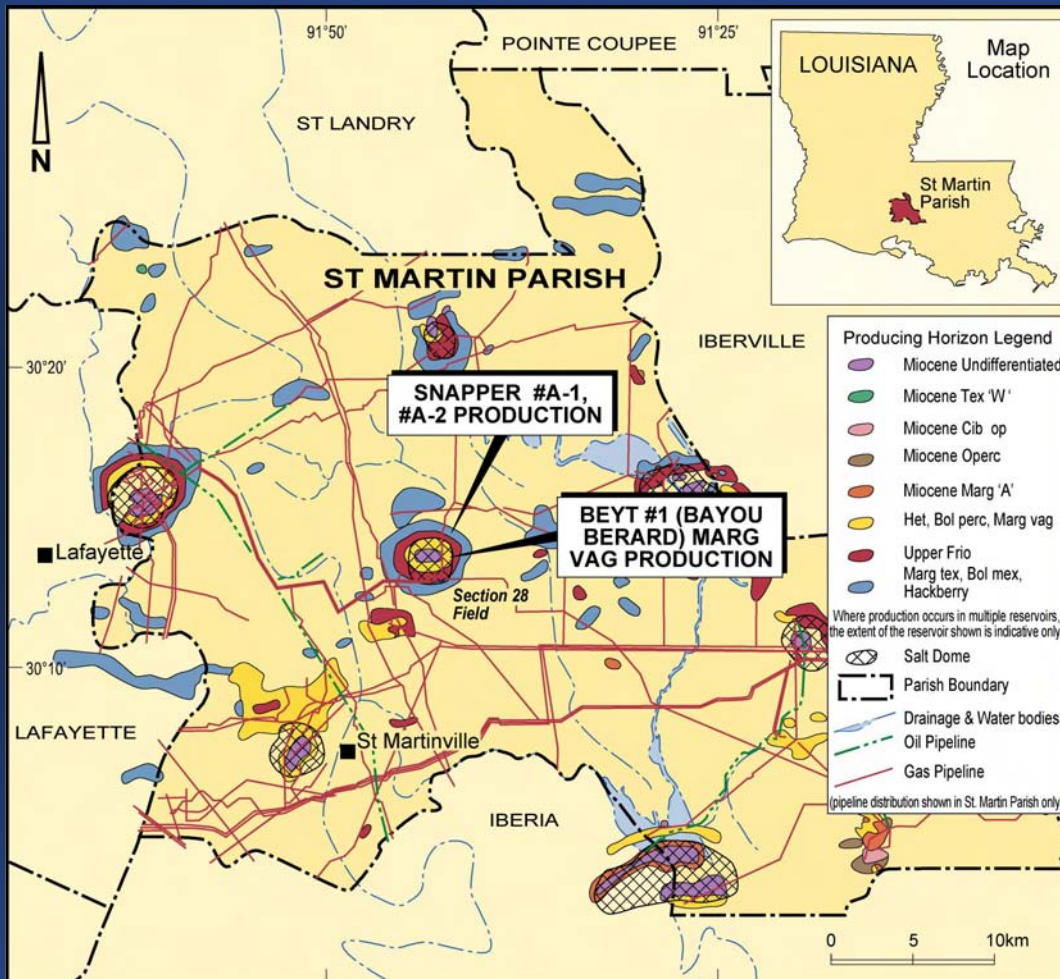
Projects

Louisiana – Section 28 Program, St Martin Parish



Projects

Louisiana – Section 28 Program, St Martin Parish



ST MARTIN PARISH, LOUISIANA
Showing producing horizons, large diameter oil and gas pipeline network and the Section 28 Field prospect area.

Projects

Louisiana – Section 28 Program, St Martin Parish

- Snapper A1 on-line Oct 07. Currently in production. TEX WI 25%.
- Snapper A2 drilled Dec 07; on-line 2/08. Currently in production. TEX WI 25%.
- Bayou Berard drilled Jan 08; on line 4/08. Currently shut-in. TEX WI 15%.
- Estimated Snapper A1/A2 3P volumes: **7.5 Bcf plus 0.42 MMBO**

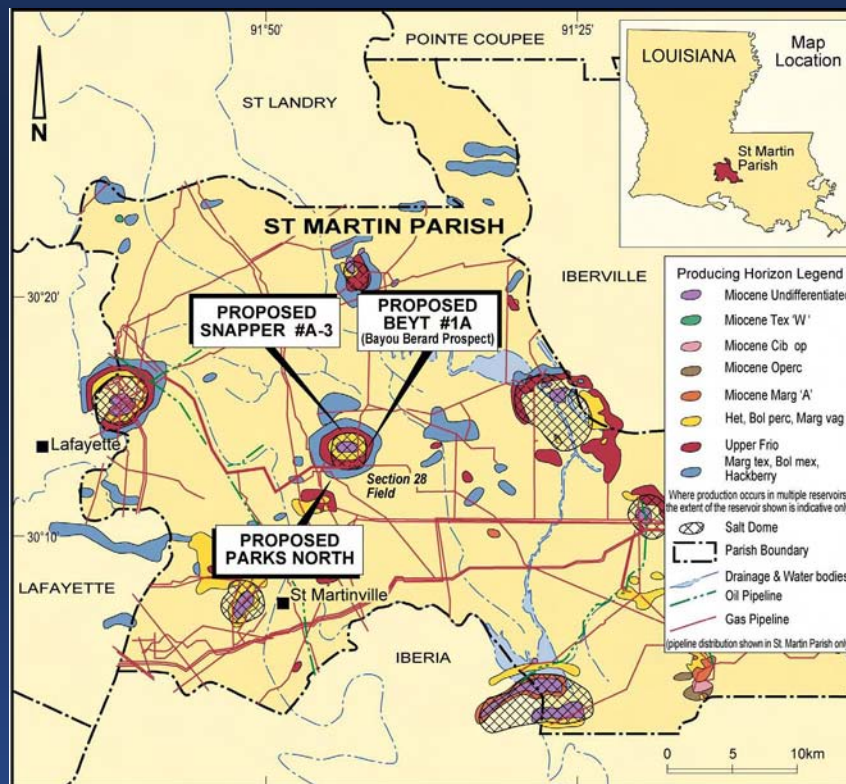


Snapper wells – A1, A2 (foreground)

Projects

Louisiana – Section 28 Program, St Martin Parish

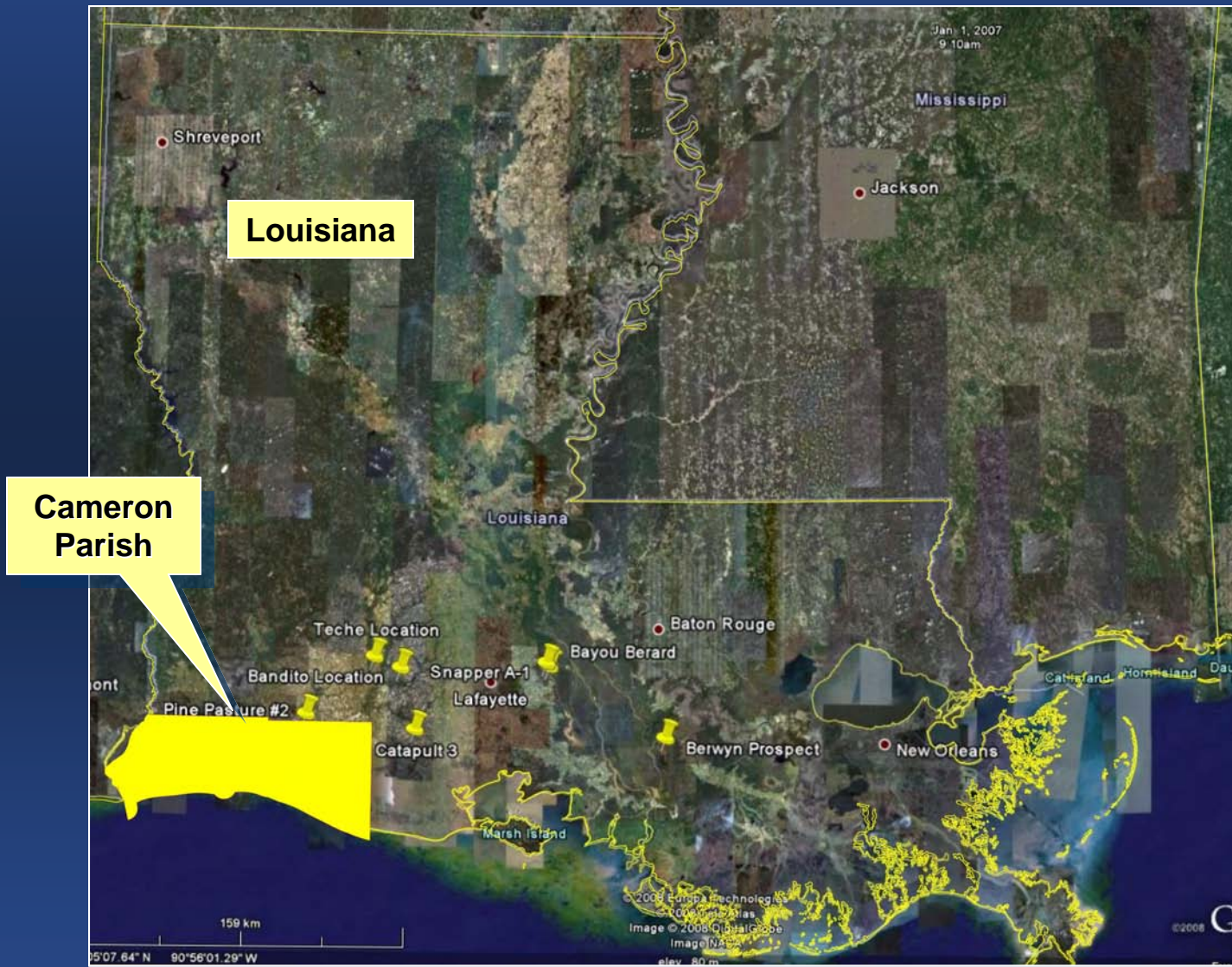
- Snapper #A-3: 0.7 MMBO, 4 Bcf* Scheduled Q4 08; TEX WI 25%
- Bayou Berard (Marg Tex): 1 MMBO, 0.4 Bcf* Scheduled Q1 09; TEX WI 15%
- Parks North: 0.15 MMBO, 25.7 Bcf* Scheduled Q1 09; TEX WI 10%



*Estimated volumes are Operator's unrisked, upside estimates

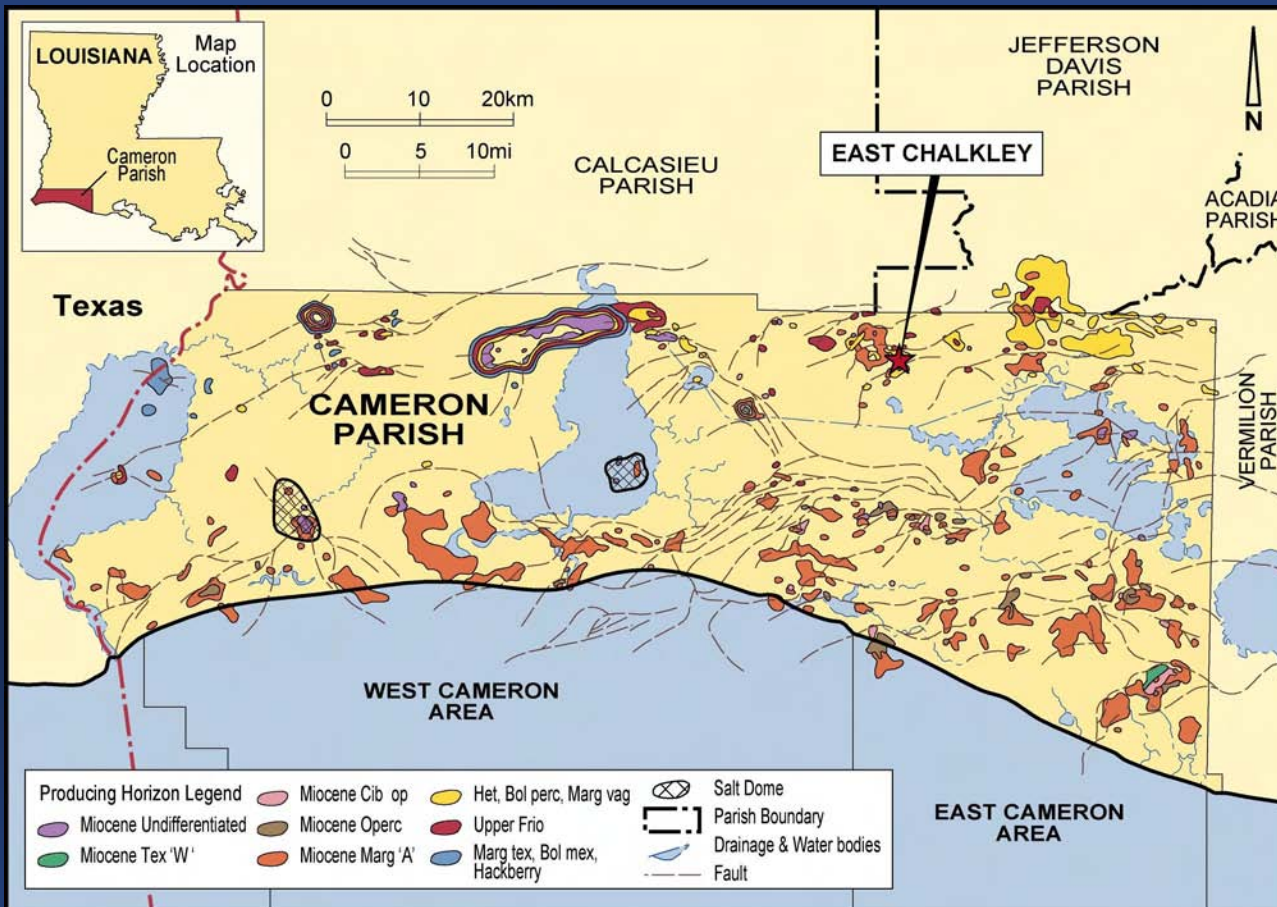
Projects

Louisiana – East Chalkley Field, Cameron Parish



Projects

Louisiana – East Chalkley Field, Cameron Parish



Projects

Louisiana – East Chalkley Field, Cameron Parish

- TEX working interest in project is 25%
- Pine Pasture #2 drilled June 08; well presently producing **120 BOPD** (plus water) as part of extended flow test
- Plans underway to drill disposal well to allow enhanced production
- Appraisal and development plans being progressed
- Estimated “most likely” field volume: **2.4 MMBO** recoverable

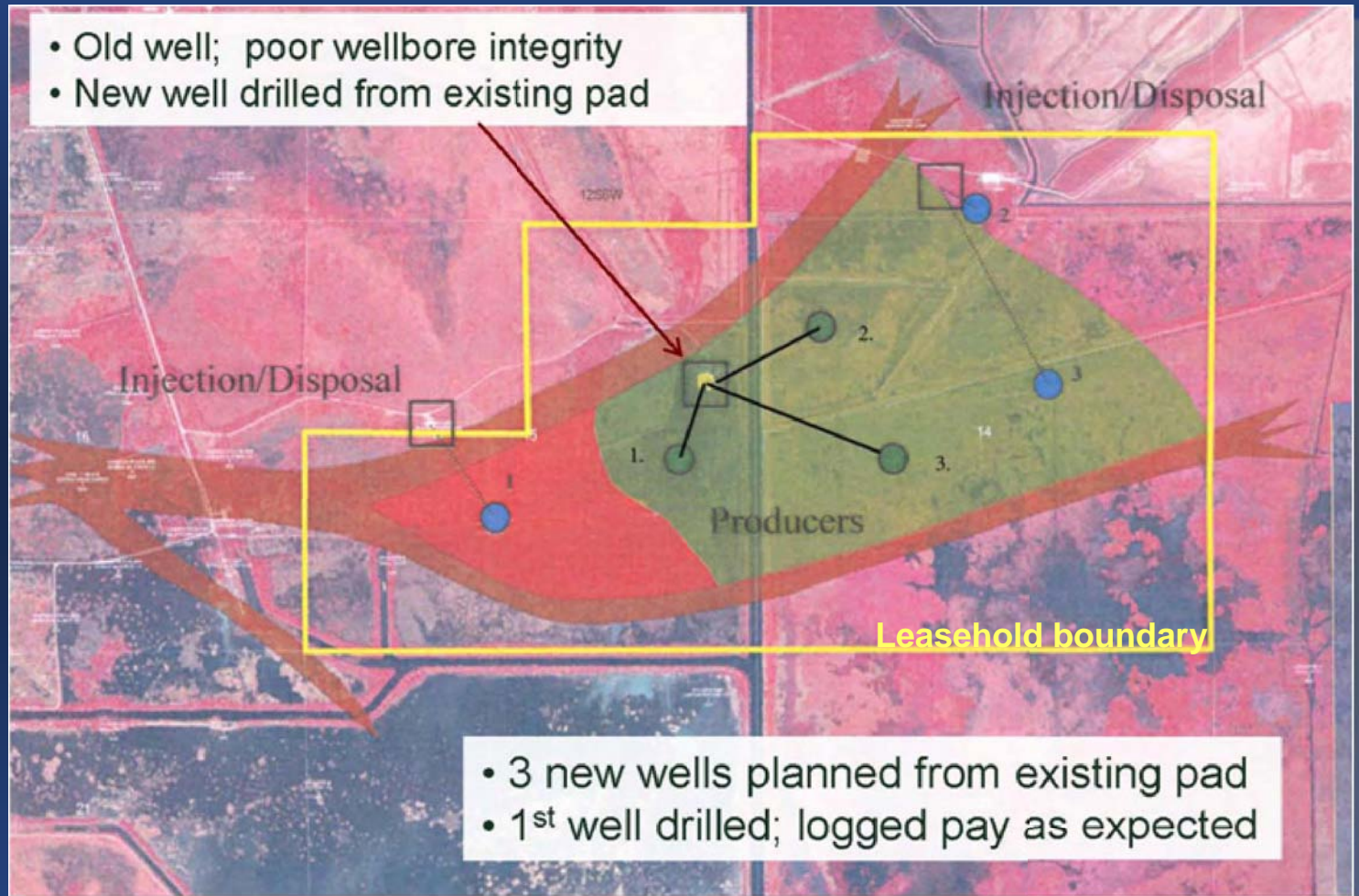


Rig at Pine Pasture #2

Projects

Louisiana – East Chalkley Field, Cameron Parish

- Old well; poor wellbore integrity
- New well drilled from existing pad

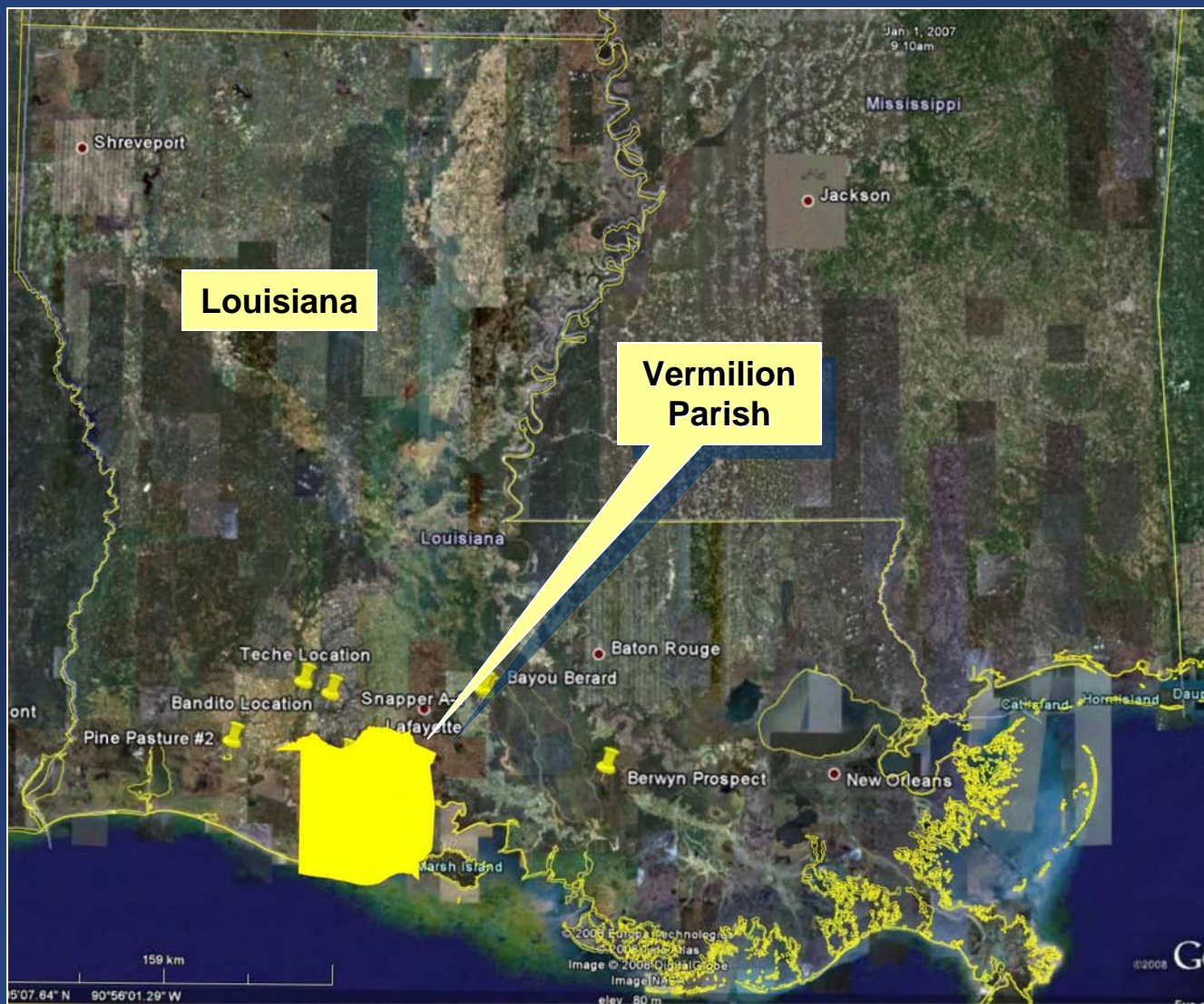


East Chalkley schematic over satellite photo

Graphic courtesy PetroResources

Projects

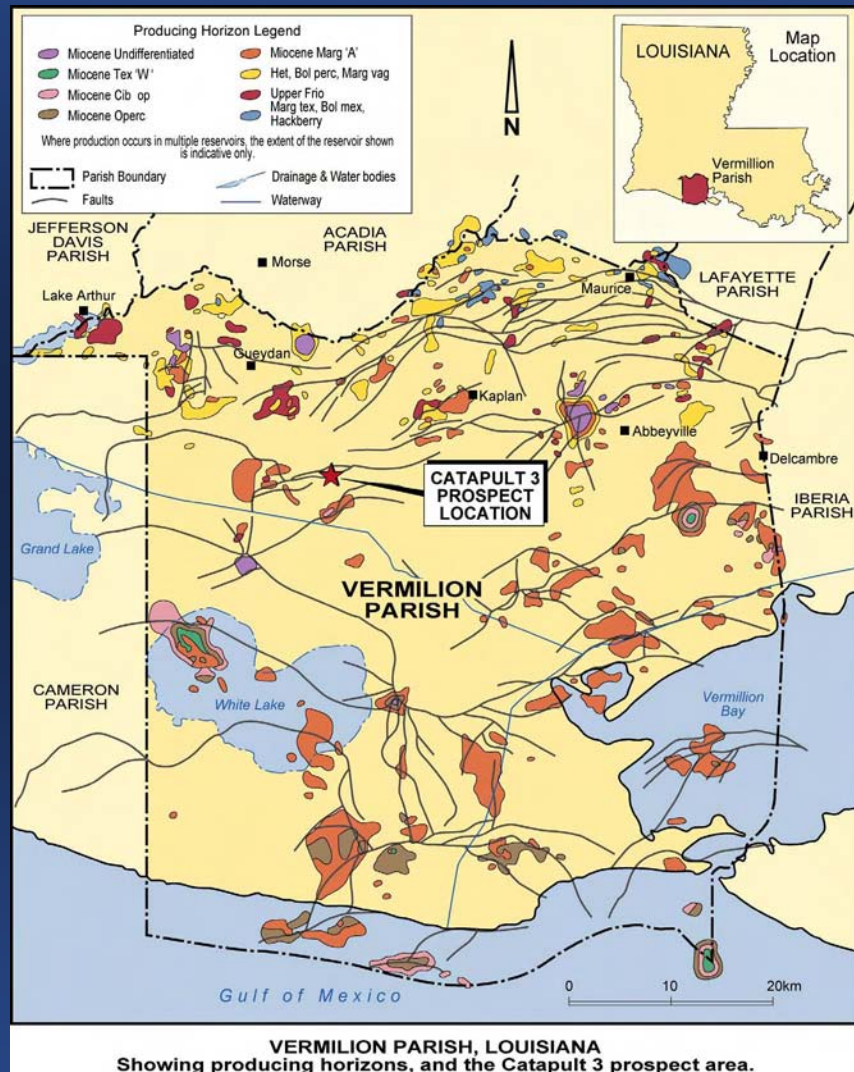
Louisiana – Catapult Prospect, Vermilion Parish



Projects

Louisiana – Catapult Prospect, Vermilion Parish

- TEX interest in project 15%
- Well to test **204 Bcf gas plus 10 MMBO***
- Well now scheduled for Q1 09 drilling
- Two follow-up prospects with further **157 Bcf plus 8 MMBO*** potential



*Estimated volumes are Operator's unrisks, upside estimates

Projects

Forward program

Estimated Timing	Prospect/Field	Location	Target Working Interest	
Drill Q4 2008	Snapper A3	St Martin Parish	25%	0.7 MMBO / 4 Bcf Snapper A1 follow-up
Drill Q1 2009	Parks North	St Martin Parish	15%	0.15 MMBO / 25.7 Bcf
Drill Q1 2009	Bayou Berard (Marg Tex)	St Martin Parish	10%	1 MMBO / 0.4 Bcf
Drill Q1 2009	Catapult	Vermilion Parish	15%	10 MMBO / 204 Bcf
2009	East Chalkley	Cameron Parish	25%	2.4 MMBO Ongoing appraisal and development

Note

The estimated timing of drilling may continue to vary as, due to the current uncertainty in global economies and credit markets, planned wells are being re-scheduled while operators re-configure the make-up of the partners or investor groups in the well(s).

Target Energy Limited

These are challenging times, but your company has:

Cash to meet its commitments

Ongoing production that more than covers our running costs

Low/med risk prospects to drill in the Section 28 Program area

An exciting high potential well to drill at Catapult

An ongoing oil field appraisal and development program at East Chalkley

In other words, the outlook is for a strong future.

Thank you for
your attention

